

Arklow Bank Wind Park 2

Blade Tip ZTV

Legend

- SLVIA Viewpoint
 - ABWP2 Project Design Option 2 - 47 WTG's
 - ABWP2 OSP Locations
 - ABWP2 Array
 - ABWP2 Cable Corridor and Working Area
 - 60km Study Area
 - 10km radii
- No of Blade Tips Theoretically Visible
- 1 - 10
 - 11 - 20
 - 21 - 30
 - 31 - 40
 - 41 - 47

Notes
 Esri, Garmin, GEBCO, NOAA NGDC, and other contributors
 Contains Ordnance Survey data
 © Crown copyright and database rights (2022). OS OpenData.

Coordinate System:
 ETRS 1989 UTM Zone 30N

0 10 20 km

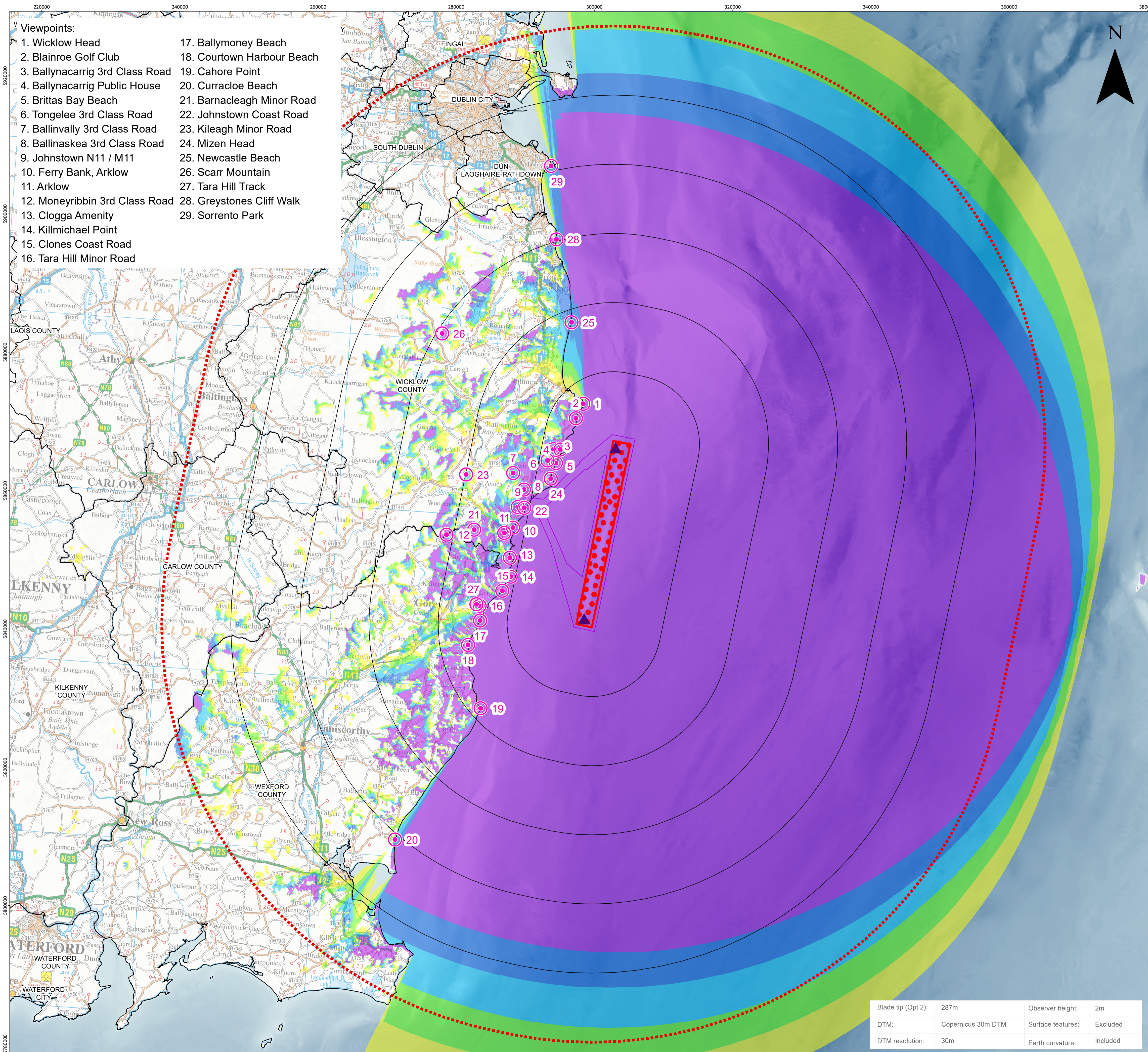
0 5.5 11 nm

Scale: 1:275,000 @A1 Date: 15/02/2024 Drawn by: BPHB Checked by: RH Approved by: SM

Suites B2 & C2
 Higher Mill
 Higher Mill Lane
 Buckfastleigh
 Devon
 TQ11 0EN
 www.gobeconsultants.com
 +44 (0)1626 323890



Figure 17.7.2



Blade tip (Opt 2):	287m	Observer height:	2m
DTM:	Copernicus 30m DTM	Surface features:	Excluded
DTM resolution:	30m	Earth curvature:	Included

Figure Reference: ARK_SLVIA_Fig17-7-2_BT_ZTV_Opt2_A1

© This drawing and its content are the copyright of GoBe Consultants Ltd and may not be reproduced or amended except by prior written permission.

©EMODnet Bathymetry Consortium (2022); EMODnet Digital Bathymetry (DTM).

Includes Ordnance Survey Ireland data reproduced under OSI Licence number 2057426. Unauthorised reproduction infringes Ordnance Survey Ireland and Government of Ireland copyright. © Ordnance Survey Ireland, [2023]